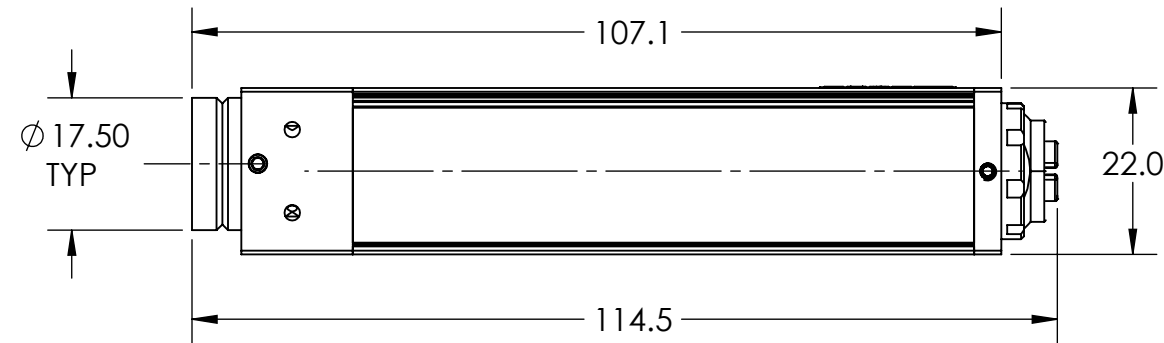
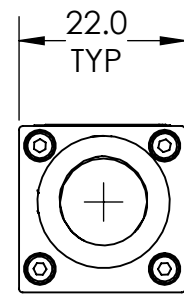
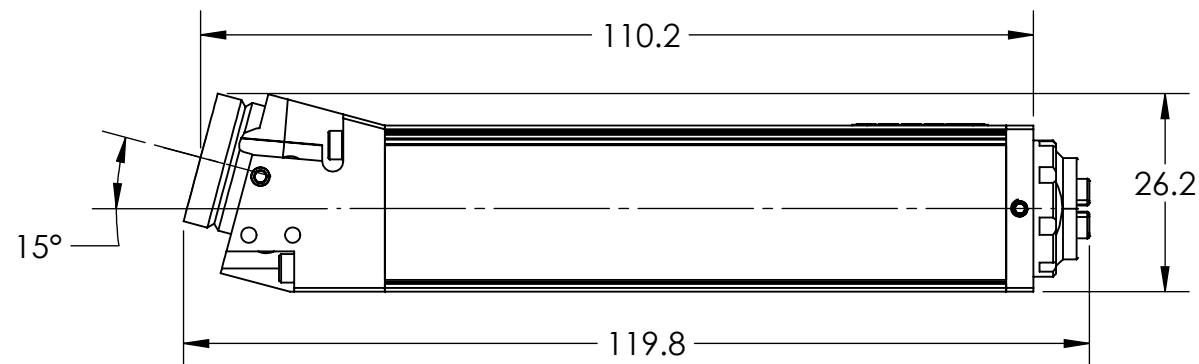
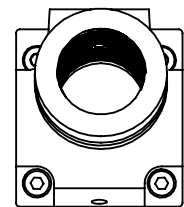


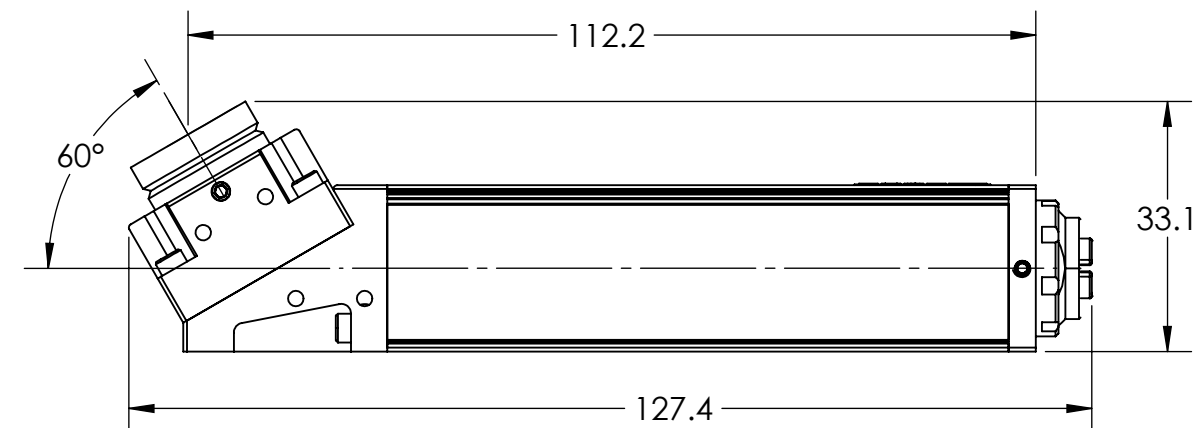
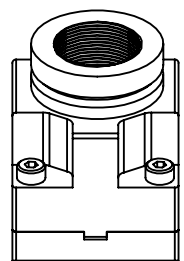
REVISIONS				
ZONE	REV.	DESCRIPTION	DATE	DRAWN BY
	1	INITIAL RELEASE	2021-02-22	PB



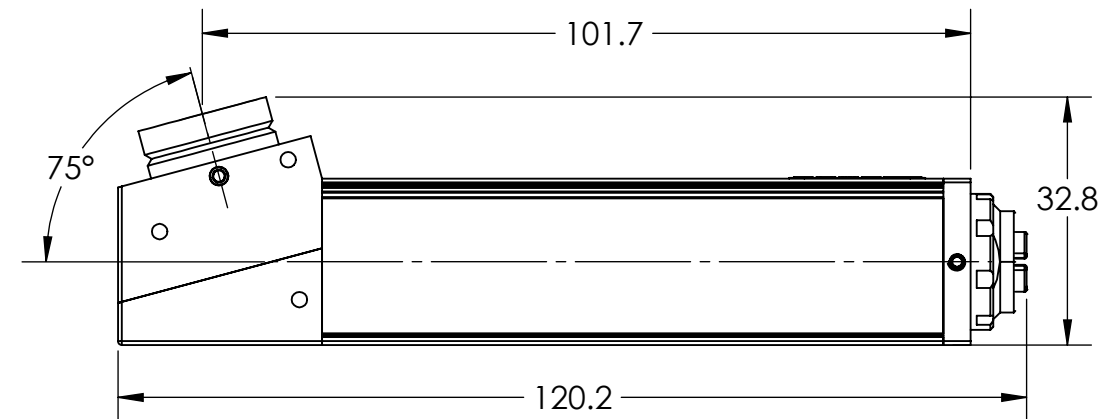
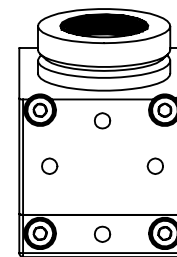
XVC-700/710 STANDARD (0°) CAMERA



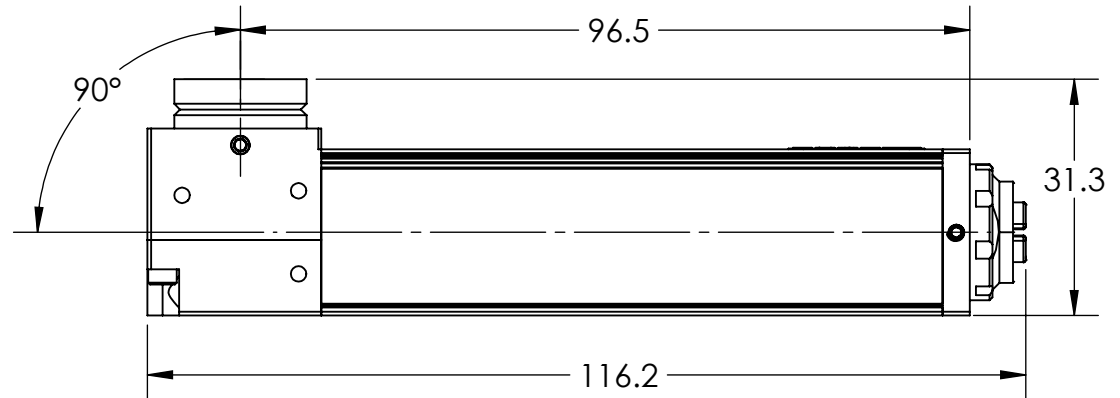
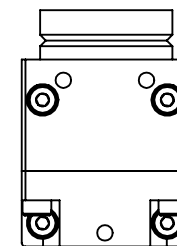
XVC-700/710 - 15° CAMERA



XVC-700/710 - 60° CAMERA



XVC-700/710 - 75° CAMERA



XVC-700/710 - 90° CAMERA

NOTES:
1. REFER TO THE SPECIFIC CAMERA ANGLE OUTLINE FOR MORE DIMENSIONS AND MOUNTING DETAILS.



UNLESS OTHERWISE SPECIFIED:
DIMENSIONS ARE IN MM
STANDARD TOLERANCES:
TWO PLACES DECIMAL ±0.1
ONE PLACE DECIMAL ±0.2
ANGULAR: ±0.5°
SURFACE TEXTURE: 1.6
INTERPRET GEOMETRIC TOLERANCES PER: ANSI 14-Y5
UNLESS OTHERWISE SPECIFIED IN SEPARATE TABLE, MFG PART NUMBER IS DEFINED AS DRAWING NUMBER
CAD GENERATED DRAWING FROM SOLIDWORKS MODEL FILE: 812-910-01

1016 SUTTON DR, UNIT C5 BURLINGTON, ONTARIO, L7L 6B8 CANADA Tel: + 1-905-331-6660	
DESIGNED:	X Y
DRAWN:	pbarbu 2021-02-22
ENG. APPR.:	X Y
MATERIAL:	N/A
FINISH:	N/A

Xiris Automation Inc.	
TITLE: XVC-700/XVC-710 CAMERA ANGLES OUTLINE	
DRAWING #:	REV:
812-910-01	1
SCALE: 1:1	WEIGHT:
	SHEET 1 OF 1

APPROVED IF THIS NOTE IS VISIBLE, DRAWINGS HAVE NOT BEEN APPROVED FOR MANUFACTURING. USE FOR REFERENCE ONLY.
By psleggs at 2:28 pm, Mar 02, 2021