



EXTRACTION SOLUTIONS



WELDING FUME EXTRACTION SOLUTIONS



BY WELDERS. FOR WELDERS

TRANSLAS.CA

NO FUMES, ONLY CLEAN AIR.



SOURCE EXTRACTION & FILTRATION

ENGINEERED FOR THE WELDING PROCESS

COMPLETE RANGE FOR YOUR PLANT/SHOP

HIGH QUALITY, TESTED EQUIPMENT

USER FRIENDLY UNITS, READY TO USE

Ready to use 'plug & play' systems for the extraction and filtration of harmful fumes, vapours, odours, micro-dust and particles airborne during welding processes.

ABOUT TRANSLAS

Translas is a Dutch manufacturer of welding guns since 1960. A company founded by welders, for welders with a passion for innovation and new technologies; constantly striving to engineer innovative products that boast a distinctive design as well as quality and functionality.

Welder's safety is of paramount importance to Translas. The company's goal is to globally reduce welders' exposure to hazardous fumes and to provide a healthier and safer work environment. Some of the pioneering products include extractor guns with a built-in module to safely extract welding fumes at the source and portable extraction units for high performance extraction.

Translas products are now exclusively distributed on the Canadian market by Translas Canada Industries Ltd, located in Woodstock, Ontario.

Translas Canada Industries offers a complete range of air filtration products for welders including a range of high-quality, flexible systems and dust collection equipment, a complete range of MIG, TIG and Extractor guns as well as accessories. Exceptional product quality, ergonomic and contemporary design and a high degree of reliability of service are always key attributes of any Translas welding equipment.



EXTRACTORS



MIG



TIG



SPECIALTY



SAFETY/PAPR

HEALTH & SAFETY CONCERNS ASSOCIATED WITH THE WELDING PROCESS

Welding fumes contain vapours, a mixture of airborne gas by-products and fine particles. The composition of the mixture depends on the welding method and the products that are welded. The vapours and gases released during welding can lead to serious health problems. Short-term exposure can result in nausea, dizziness, or eye, nose and throat irritation.

Prolonged exposure to welding fumes can lead to cancer of the lung, larynx and urinary tract, as well as nervous system and kidney damage. Certain gases, such as helium, carbon dioxide and argon, displace oxygen and argon can pose suffocation risks, particularly in enclosed work areas. This is why Translas, a Dutch welding gun manufacturer, developed a welding gun – 7XE Extractor - that extracts the welding fumes directly at the source.

ABOUT TRANSLAS



7XE EXTRACTOR GUN

SAFE & EFFECTIVE EXTRACTION OF WELDING FUMES AT THE SOURCE



WHY THE 7XE EXTRACTOR GUN

The safest and most effective method: Extraction at the source

Extraction at the source proves to be the safest and most effective solution to achieve better work environments for welders. Translas developed a fume extraction solution – 7XE Extractor gun with a mobile filtration unit “ClearO2”. The 7XE Extractor solution extracts up to 95% of the welding fumes directly at the source. When using the Translas 7XE in combination with ClearO2, the harmful welding fumes and individual particulates are no longer released directly into the air; they are captured immediately as generated. This system reduces the amount of welding fumes and particulates in the workplace to less than 1 mg/m³ during an 8-hour working day. **The legal threshold in Canada for welding fumes in the workplace is 5mg/m³ over the span of an 8-hour work day.** Individual particulates such as Manganese and Hexavalent-Chromium thresholds regulations can vary by province, but with the Translas extraction system these particles are also extracted successfully at the source before air born.

THE TRANSLAS 7XE EXTRACTOR REDUCES THE WELDER’S EXPOSURE TO WELDING FUMES UP TO 95%

LIGHT & ERGONOMIC

The 7XE Extractor is a very light gun and weighs approximately 3.3 lbs, which is lighter than a regular 510 gun. The small, ergonomic handle makes the 7XE one of the most comfortable guns to work with for any welder; at any job, maximizing comfort and therefore productivity.

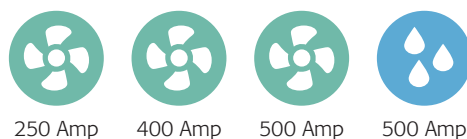
7XE EXTRACTOR WELDING GUN



INTEGRATED EXTRACTION

The 7XE gun was engineered to reach maximum fume extraction capability when used with the ClearO2 W-series. The advantage of a mobile extraction unit like the W-series with an integrated filtration system is that it can be used in different workplaces.

4 TYPES OF GUNS



Air cooled 250, 400 or 500 Amp
Water cooled 500 Amp
All of them are 100% duty cycle.

SWITCH MODULE OPTIONS

There are various modules available; single, double, triple or digital. We are able to operate your welding guns remotely, through a fully programmable digital PCB (Printing Circuit Board) from your machine supplier.



LEGAL THRESHOLDS

Legal threshold in various countries for welding fumes in the workplace over the span of an 8-hour work day, depending on the welded material:

- Canada - up to 5 mg/m³
- Germany - 1.25 mg/m³
- The Netherlands - 1 mg/m³
- United Kingdom - 5 mg/m³

CONICAL GAS NOZZLES

The conical gas nozzles provide better visibility and accessibility. The nozzles come in either 12mm (0.472”) or 14mm (0.551”) diameters.



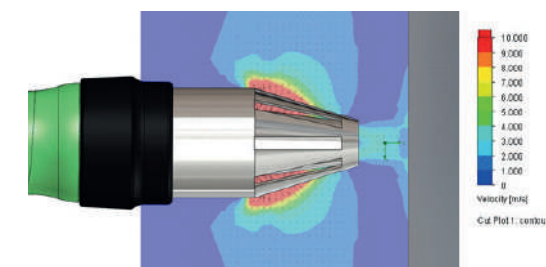
FLEXIBLE & MANEUVERABLE

A ball and socket joint between the gun handle and the hoses offers flexibility and maneuverability.



APPLICATION

The 7XE Extractor is intended for use in MIG welding processes that employ shielding gases. Due to its unique patented gas nozzle, the 7XE Extractor is able to reach an optimal fume capture up to 95% directly at the source.



7XE EXTRACTOR WELDING GUN



7XE EXTRACTOR GUN

CONSUMABLES TO FIT YOUR SPECIFIC WELDING APPLICATION

7XE EXTRACTOR

7XE Extractor is the standard execution of our fume extraction line. It is light – only 3.3 lbs – but high in power with 100% duty cycle for heavy duty work.

7XE MINI EXTRACTOR 250 AMP

7XE MINI Extractor is the lightest fume extraction gun on the market. It weighs only 2.4 lbs and has a small handle, nozzle and small conical hose (from 1.2" to 1.5").

The 7XE MINI Extractor was developed for welding jobs where constant changing in positions is required, such as in manual automotive welding. The constant change in angles and positions results in unwanted tension on the wrist and possible chronic pain. With the 7XE MINI Extractor gun the tension is minimal.

NECK OPTIONS

With the various necks available, you can pick the gun that is perfect for your application: 45°-neck; 60°-neck and straight neck for Semi-automatic welding.



NOZZLE OPTIONS

There are three nozzle variations to suit any kind of joint application for optimal results. The nozzles can be changed in a second.

MINI EXTRACTOR NOZZLES:

12 MM STANDARD

The nozzle offers slightly wider shielding gas coverage on medium-thickness materials in butt and fillet applications, and outside-corner joints. The 12mm Standard nozzle is delivered as a standard with the 7XE MINI Extractor.



12 mm standard

14 MM

For heavier-thickness, high-current and high-deposition butt- and lap-joint applications, this nozzle offers greater shielding gas coverage to help prevent porosity.



14 mm

7XE STANDARD/MINI:

14 MM SPECIAL

Where space is limited and fit is tight, this nozzle offers better access and greater shielding gas coverage to reduce porosity. The 14mm Special nozzle is delivered with every 7XE Extractor gun type.



14 mm special

CONTACT TIPS

Contact tips that have been made for the 7XE Extractor have a unique conical tip design. You can choose from:

- Standard copper for everyday welding
- Available in sizes from .030 to .094
- Tri-metal (CuCrZr) for high-heat applications
- Special nozzles for aluminum welding



LINERS

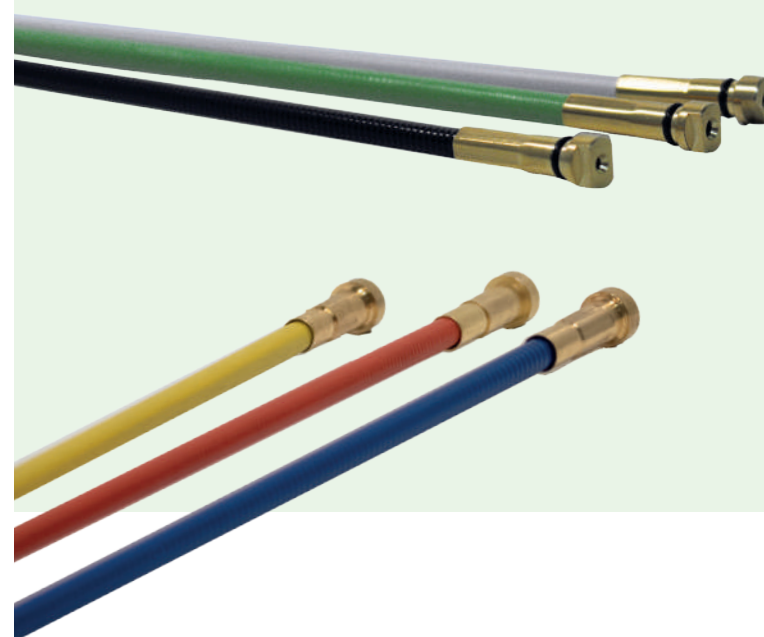
Choose the right liner for your wire diameter and type when working with a standard 7XE gun:

- Black:** for .039" - .047" wire
- Gray:** for .062" wire
- Green:** for .078" - .094" wire

Choose the right liner when working with the 7XE MINI Extractor gun:

- Blue:** for .023" - .031" wire
- Red:** for .035" - .045" wire
- Yellow:** for .062" wire

All liner types are suitable for stainless steel applications.



MAINTENANCE

AIRFLOW METER

Always use the Airflow meter to ensure maximum extraction effect and a cool gun.



GAS METER

The gas meter is used for best weld quality by keeping the right amount of shielding gas around the weld seam.

CERAMIC SPRAY

Prolong the life of your gun and all spare parts by applying the Ceramic Spray to the 7XE Extractor before work.

Y-BRANCH BACK-END CONNECTION

One section connects to the welding machine, the other to the hose of the ClearO2 Hi-vac unit. Compatible to almost any welding machine with the right back end adapter; incl. Miller, Lincoln, Fronius, ESAB and more.



WIRE FEED CONNECTORS

There are wire feed connectors available to fit any type of machine, including Tweco, Miller, Lincoln and ESAB (Euro). Due to the design of the back housing, you can switch between the connector types with ease.



7XE EXTRACTOR GUN

FUME EXTRACTOR GUN RANGE



AIR COOLED

7XE MINI Extractor

250 Amp
Mixed gases
Duty Cycle 100%
Air Cooled



7XE MINI Extractor Semi-Automatic

250 Amp
Mixed gases
Duty Cycle 100%
Air Cooled



7XE Extractor

400 Amp
Mixed gases
Duty Cycle 100%
Air Cooled



7XE Extractor Semi-Automatic

400 Amp
Mixed gases
Duty Cycle 100%
Air Cooled



7XE Extractor

500 Amp
Mixed gases
Duty Cycle 100%
Air Cooled



WATER COOLED

7XE Extractor

550 Amp
Mixed gases
Duty Cycle 100%
Water Cooled



7XE MINI Extractor Semi-Automatic

550 Amp
Mixed gases
Duty Cycle 100%
Water Cooled



HI-VAC UNITS INTEGRATED FUME EXTRACTION



ENGINEERED FOR THE TRANSLAS 7XE EXTRACTOR GUNS

Powerful, flexible and mobile.

The ClearO2 portable extraction units offered by Translas were engineered to work with the 7XE Extractor to deliver the best results - up to 95% extraction of welding fumes directly at the source.

The ClearO2 portable extraction units and solutions are ready to use systems, designed for maximum convenience for the welder during work.



DESIGNED FOR THE 7XE EXTRACTOR GUNS

MOBILE, WITH WHEELS OR CRANE HOOKS

UNITS FOR 1-4 WELDERS

SUITABLE FOR HIGH-PRODUCTION ENVIRONMENT

QUIET < 65dB & EFFICIENT



HI-VAC UNITS



AUTOMATIC FILTER CLEANING

The ClearO2 W-series have an automatic cleaning function by reverse compressed air pulse. The moment the under pressure in the filter is too high, the units start to clean the filters automatically. A manual cleaning function can be done by pressing a single button. With a large filter area the ClearO2 Hi-vac units are the most efficient units of their size.

EFFICIENT MOTOR SYSTEM

The electric motor of the units are designed to work continuously. Due to the automatic cleaning function and the simplified motor system, the maintenance on the units is minimal, making them long-lasting and time-saving.

The automatic start/stop function was engineered to preserve energy and to synchronize the units with the Translas Extractor guns. The moment the gun is out of the gun holder, the machine automatically starts working.



POWERFUL FILTRATION

With the combination of a 7XE Extractor welding fume gun and a ClearO2 unit, the captured fumes are filtered with an efficiency > IFA 99.8%. The powerful solution is suitable for high production welding environments.

QUIET & EFFICIENT

The ClearO2 units only generate 65dB when in use, making them one of the quietest hi-vac units on the market.

ONE WELDER SOLUTION



W100 SERIES FUME EXTRACTION UNIT

The ClearO2 W100 series was designed to accompany the Translas Extractor guns. The unit together captures up to 95% of welding fumes directly at the source, and filter with an efficiency > IFA 99.8%. The unit is compact, mobile and light-weight. Changing location on the job is easy, the W100 is equipped with 4 wheels, from which 2 are lockable.

POWER SUPPLY OPTIONS

- W100: 220V-240V
- W110: 575V-600V
- W150: 380V-480V



Dimensions: (L x W x H) 26" x 16" x 22"/26" (without/with wheels)

Mobility: 4 wheels, 2 rotating & with locking mechanism

Power supply: 220-240V (W100) 575V-600V (W110) 380-480V (W150)

Amperage: 20 AMPS

Motor power: maximum 1.5 KW/2 HP

Suction flow: max. 106 cfm (free blowing)

Suction flow effective: max. 38 cfm (Translas Extractor Guns)

Working pressure: max. 36,000 Pa (el. Controlled) Static Pressure

Filter surface: 54 sqft active filter surface, Filter efficiency: IFA > 99,8%

Filter type: disposable filter, HEPA rated

Max. DC: 100% (VFD)

Inlet: 2"

Noise level: max. dB(A) < 65 Db (A) (at 100% suction flow)

Weight: 99 lbs

Certifications: CSA, CE and W3

W100 SERIES TECHNICAL SHEET

CLEARO2 HI-VAC UNITS



AUTO START/STOP OPTIONS

These options are designed to work only with the 7XE Extractor guns.

- Clamp Auto Start/Stop
- Gun Holder



CLEARO2 HI-VAC UNITS - 1 WELDER SOLUTION W100



TWO WELDER SOLUTION

W200 SERIES FUME EXTRACTION UNIT

The ClearO2 W200 series was designed to accompany the Translas Extractor guns. The unit together captures up to 95% of welding fumes directly at the source, and filter with an efficiency > IFA 99.8%. The unit is compact, mobile and light-weight. Changing location on the job is easy, the W200 is equipped with 4 wheels, from which 2 are lockable.

POWER SUPPLY OPTIONS

W200: 380V-480V
W210: 575V-600V



Dimensions: (L x W x H) 28" x 17" x 27"/31" (without/with wheels)

Mobility: 4 wheels, 2 rotating & with locking mechanism

Power supply: 380-480V (W200) 575V-600V (W210)

Amperage: 20 AMPS

Motor power: maximum 4 HP

Suction flow: max. 147 cfm (free blowing)

Suction flow effective: max. 38 cfm (Translas Extractor Guns)

Working pressure: max. 45,000 Pa (el. Controlled) Static Pressure

Filter surface: 54 sqft active filter surface, Filter efficiency: IFA > 99,8%

Filter type: disposable filter, HEPA rated

Max. DC: 100% (VFD)

Inlet: 2" x 2

Noise level: max. dB(A) < 65 Db (A) (at 100% suction flow)

Weight: 128 lbs

Certifications: CSA, CE and W3

W200 SERIES TECHNICAL SHEET

CLEARO2 HI-VAC UNITS 2 WELDER SOLUTION W200

FOUR WELDER SOLUTION

W400 SERIES FUME EXTRACTION UNIT



The ClearO2 W400 series was designed to accompany the Translas Extractor guns. The unit together captures up to 95% of welding fumes directly at the source, and filter with an efficiency > IFA 99.8%. The unit is compact, mobile and light-weight. Changing location on the job is easy, the W400 is equipped with 4 wheels, from which 2 are lockable.

POWER SUPPLY OPTIONS

W400: 380V-480V
W410: 575V-600V



Dimensions: (L x W x H) 28" x 21" x 33"

Mobility: 4 wheels, 2 rotating & with locking mechanism

Power supply: 380-480V (W400) 575V-600V (W410)

Amperage: 20 AMPS

Motor power: maximum 8 HP

Suction flow: max. 294 cfm (free blowing)

Suction flow effective: max. 38 cfm (Translas Extractor Guns)

Working pressure: max. 45,000 Pa (el. Controlled) Static Pressure

Filter surface: 2 filters, 108 sqft active filter surface, Filter efficiency: IFA > 99,8%

Filter type: disposable filter, HEPA rated

Max. DC: 100% (VFD)

Inlet: 2" x 4

Noise level: max. dB(A) < 65 Db (A) (at 100% suction flow)

Weight: 188 lbs

Certifications: CSA, CE and W3

W400 SERIES TECHNICAL SHEET

CLEARO2 HI-VAC UNITS - 4 WELDER SOLUTION W400



CLEARO2 HI-VAC UNIT

SPARE PARTS

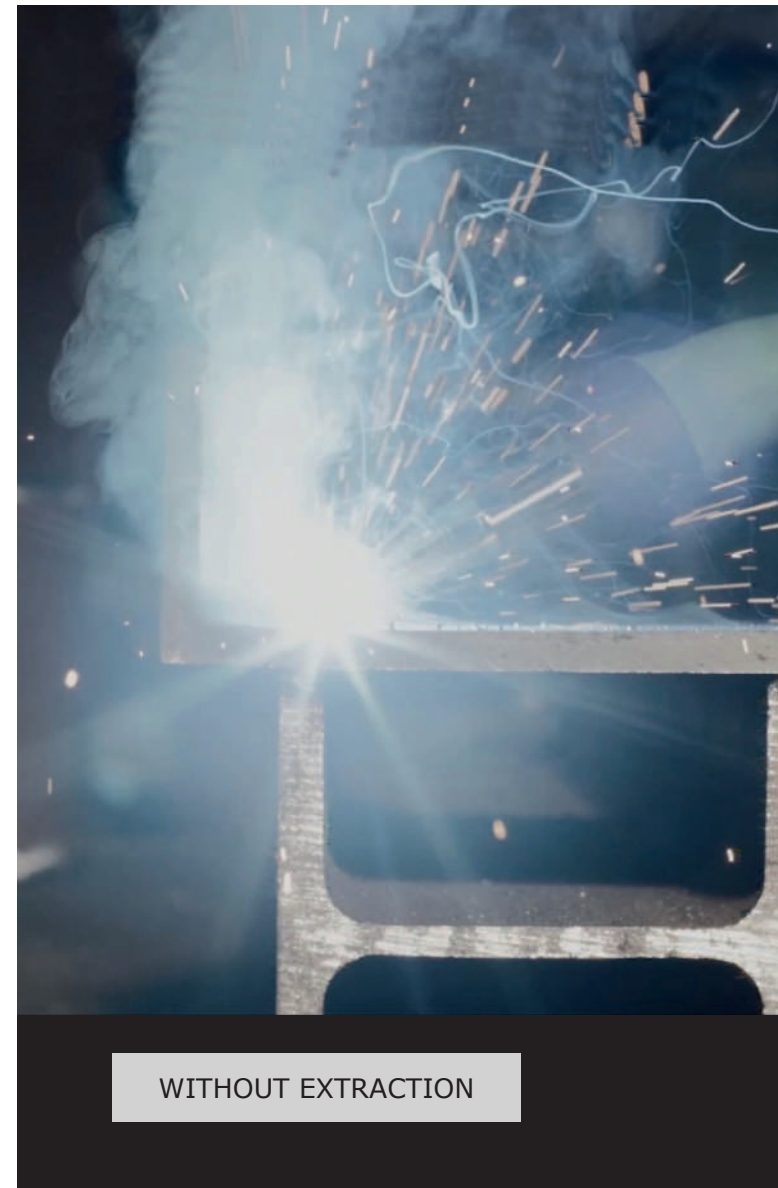


| ITEM | PART NUMBER | DESCRIPTION | PACK QTY |
|------|-------------|--|----------|
| 1 | 374012 | Torch holder Ø40mm for automatic start/stop 5mtr ClearO2 | 1 |
| - | 374013 | Torch holder Ø40mm for automatic start/stop 10mtr ClearO2 | 1 |
| - | 374014 | Torch holder Ø50mm for automatic start/stop 5mtr ClearO2 | 1 |
| - | 374015 | Torch holder Ø50mm for automatic start/stop 10mtr ClearO2 | 1 |
| 2 | 374010 | Sensing cable auto start/stop 4mtr W-serie | 1 |
| 3 | 3740103 | Extension cable auto start/stop 3mtr incl. 5-p plug W-serie | 1 |
| - | 3740105 | Extension cable auto start/stop 5mtr incl. 5-p plug W-serie | 1 |
| - | 3740110 | Extension cable auto start/stop 10mtr incl. 5-p plug W-serie | 1 |
| 4 | 374020 | Filter W-serie ClearO2 5m2 | 1 |
| 5 | 374025 | Filter mat W-serie ClearO2 (set/5pc) | 1 |
| 6 | 374099 | Ball valve to reduce the suction flow | 1 |
| 7 | 374106 | Pressure reducing valve 5-15bar 1/4-NP7.2 | 1 |
| 8 | 37422505 | ClearO2 suction hose black ø51mm 5mtr | 1 |
| - | 37422510 | ClearO2 suction hose black ø51mm 10mtr | 1 |
| 9 | 374126 | Coupler for suction hose black tbv ø51mm unit side | 1 |
| 10 | 374130 | Coupler to extend the suction hose ø51mm | 1 |
| 11 | 374017 | Extraction hood small with magnet base for ClearO2' | 1 |

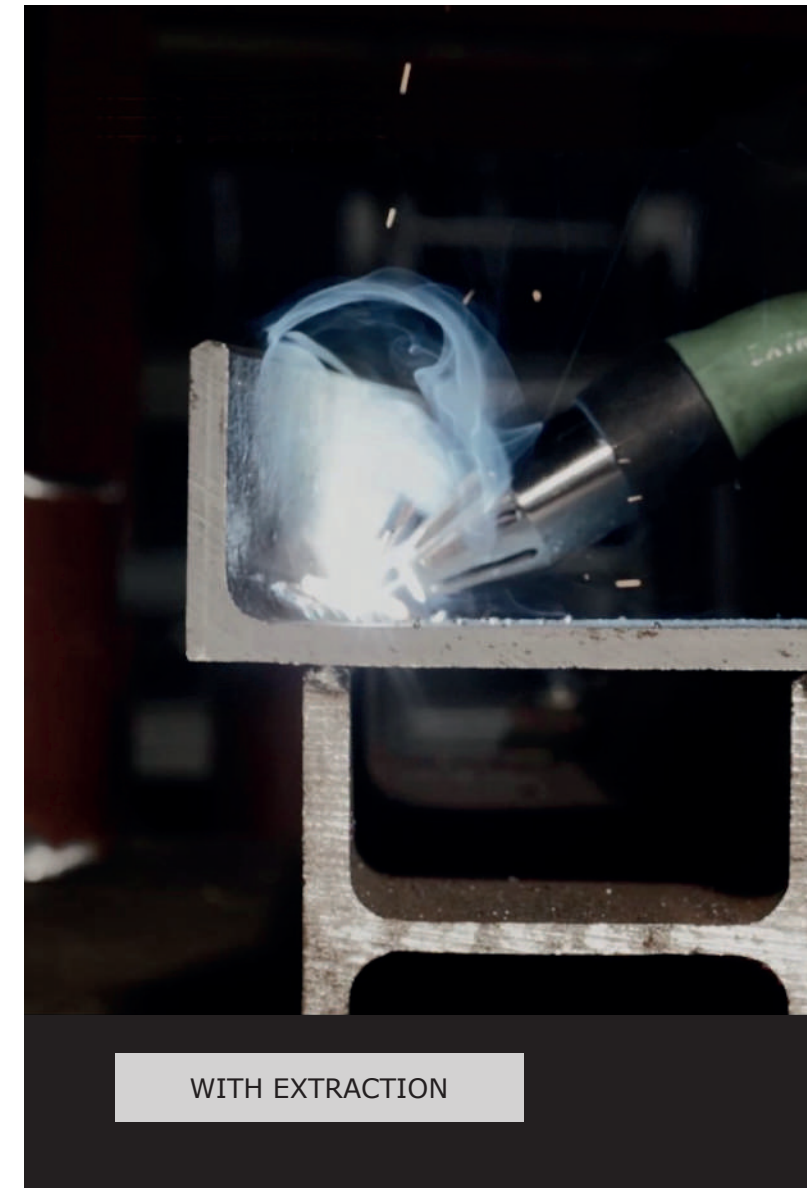
CLEARO2 HI-VAC UNIT SPARE PARTS

REAL TIME DEMO

WITH/WITHOUT EXTRACTION



WITHOUT EXTRACTION



WITH EXTRACTION

*A real time demo:
We were welding 045 flux core wire with the Translas 7XE 400amp Extractor Gun connected to the Translas ClearO2 W100 Fume Extraction unit. We show the difference with the suction turned on/off throughout this video. (Available on our YouTube Channel - Translas Canada Industries)*

WOULD YOU LIKE A DEMO AT YOUR PLANT/SHOP? Contact us today to book yours.

WELDING FUME EXTRACTION SOLUTIONS



BY WELDERS. FOR WELDERS

Translas Canada Industries Ltd.
Unit 5, 1099 Commerce Way,
Woodstock, ON
N4V 0A2, Canada

1-888-383-9080

info-CA@translas.com

TRANSLAS.CA

